

PREPARING YOUR ART WORK FOR HANGING AT THE UTAH COUNTY ART GALLERY

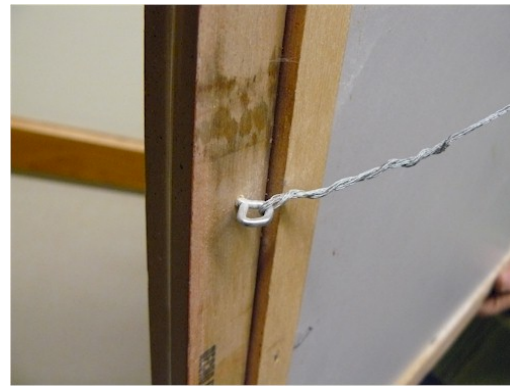
Because our priority is keeping your artwork safe and undamaged during the duration of all exhibits, the following procedure should be followed to prepare your piece for hanging.

Pieces need to be wired from each side of the back of the frame, preferably with eye screws as pictured....

Place eye screws no lower than 1/3 of the height (from the top) of the frame in order for piece to hang properly.

Please do not use string or cord...hanging wire is required.

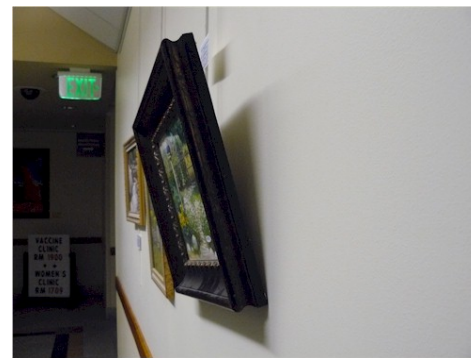
RIGHT



We prefer that knots be tied in wire first ..then wrap it around itself. This will prevent the wire from unraveling.

PLEASE DO NOT...place wire in middle of frame as pictured below...this results in the painting tilting away from the wall rather than laying flat..

WRONG



DO NOT attach wire to the backing (not to mat board, etc)...it can pull away from the frame and fall
DO NOT attach wire to any brackets inside the back of the frame, especially in metal frames (we prefer you to drill holes through metal frames so the wire won't pull loose)
DO NOT use tape or glue to adhere wire to the piece